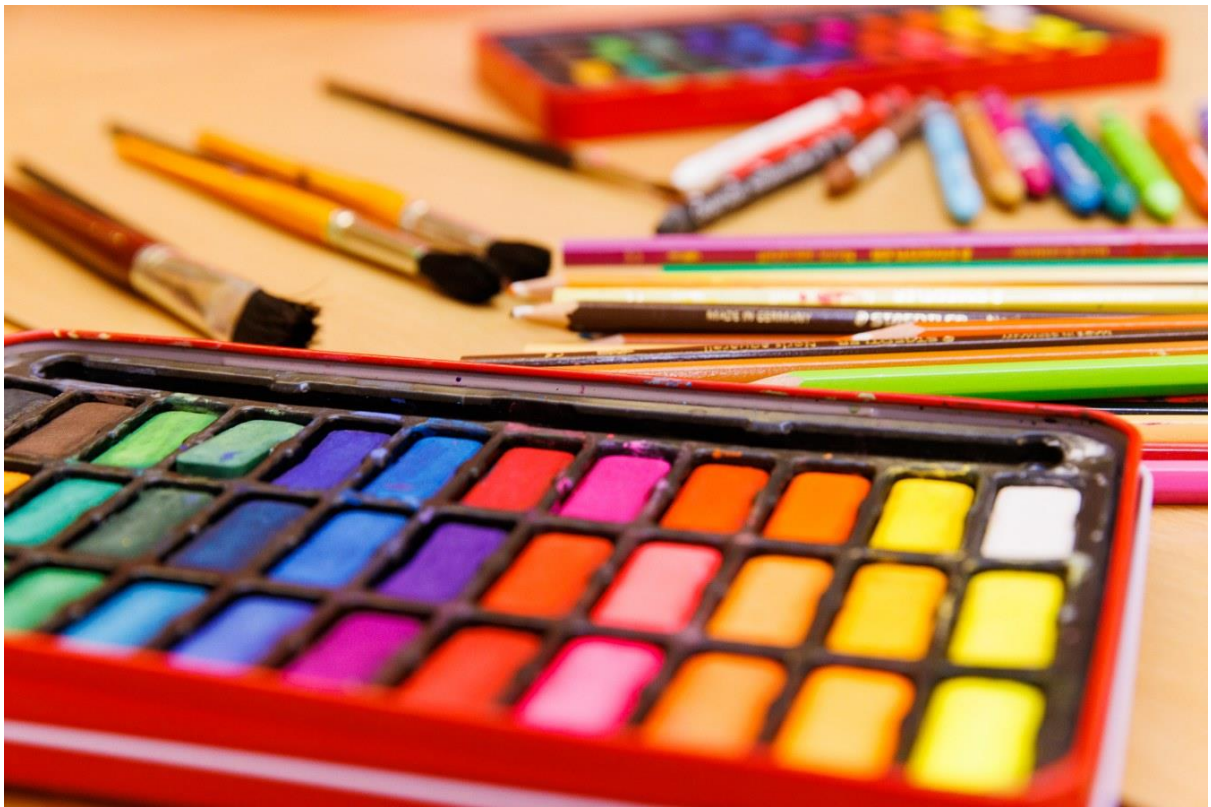




# Beech Green News

Friday 31st January

School News



## Greetings from Mrs Pope



Dear Parents and Carers,

It has been lovely to be back at Beech Green this week - although very unexpected. You will have received an email from the chair of governors about this on Wednesday. We fully appreciate this may feel like a period of uncertainty, however, the staff are working as hard as ever to provide continuity and nurture to your children. Mrs Collins and I are working with them closely and will support in every way we can.

I am aware that parents' evening dates have not been communicated. At present, we are provisionally booking March 25th and 26th as dates. More details to follow nearer the time.

Over the last 3 months we have been busy working on actions identified in the OFSTED report from last July. Among these, we have made some changes to maths teaching at Beech Green. We have worked with Steve Lomax, an external advisor, who was very complementary in his last visit and could see real progress from his first visit in October. Thank you to the staff for their hard work.

Have a lovely weekend.

Mrs Pope

**The Holiday Activity and Food (HAF) programme**

Gloucestershire County Council would like to make you aware of the holiday Free School Meal (FSM) voucher scheme that they are currently offering to families in Gloucestershire.

For February 2025 half term, Gloucestershire County Council will provide families in receipt of Free School Meals, who sign up to this offer, with vouchers to assist with food costs during the school holidays. Families who sign up to the scheme or who are already registered will receive a total of £15 per eligible child.

Voucher code emails will be sent from week commencing 10 February. Please remember to check your emails including junk/spam folders during this period as sometimes the vouchers end up there.

**Families not already registered** to receive holiday FSM vouchers can make an application from midday 27 January until midday on 7 February.

\*Please note the scheme is for children in reception to year 11 who receive Pupil Premium (income-related) free school meals and attend a school in Gloucestershire. \*Ensure the child is registered before applying for the voucher scheme as we check eligibility for the scheme by cross-referencing with the term-time free school meal register. Failing to do so may result in a family not receiving vouchers as we are unable to backdate claims. You can register by visiting the [applying for free school meals](#) page.

\*If your school is one of the five that do not use this method, we will require additional confirmation from the school on the child's eligibility. You can find more information on what schools these are on the link above.

**Families who have signed up previously do not need to re-register holiday vouchers** - they will already have been included. To ensure families already registered receives the vouchers they are eligible for, they will need to contact us with any changes to their circumstances (e.g. number eligible children or contact details) by 7 February.

**Using vouchers** – vouchers need to be used and will only be awarded once you have registered for the scheme and cannot be backdated. Vouchers should be used in the holiday period in which they are awarded. If vouchers are not claimed and have expired, they cannot be re-issued.

The vouchers are funded through grant funding we have received, and they are separate to that of term time free school meals

gloucestershire.gov.uk/holiday-school-meal-vouchers



### **February Half Term Bikeability Courses**

Bikeability courses give children and young people the skills and confidence to make journeys by bike.

*Tuesday 18<sup>th</sup> to Friday 21<sup>st</sup> February 2025*

**Skillzone, Tuffley Lane, Gloucester, GL4 0AS**

*Courses delivered by friendly, experienced and fully qualified Cycling Instructors*

*Small group sizes*

*£8 for a 4-hour course*

*Ages 9 to 14 (Level 1, 2 & 3 Bikeability available)*

**For a booking form and further information please**

**email [thinktravel@gloucestershire.gov.uk](mailto:thinktravel@gloucestershire.gov.uk)**



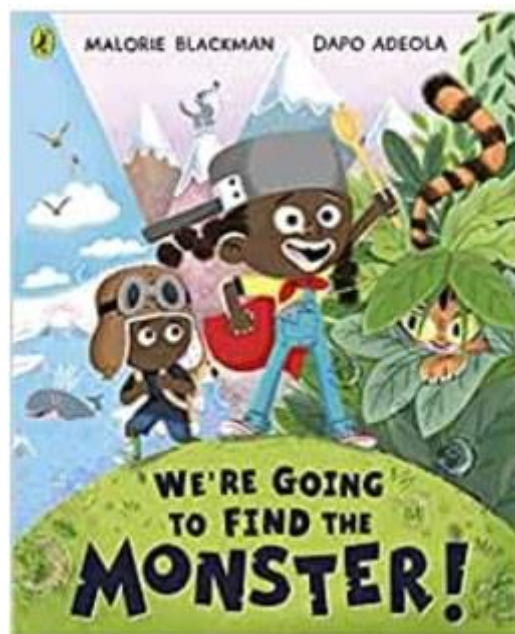
## **Bikeability**

Gloucestershire County Council are running Bikeability Courses at Skillzone in Tuffley during February Half term (18th to 21st February 2024) for any children who may have missed out on the training when the instructors visited Beech Green in the autumn term.

## **No Nuts Please!**

A reminder that we are a nut free school. Please do not send your children with any foods containing nuts, such as cereal bars, trail mix or peanut butter sandwiches.

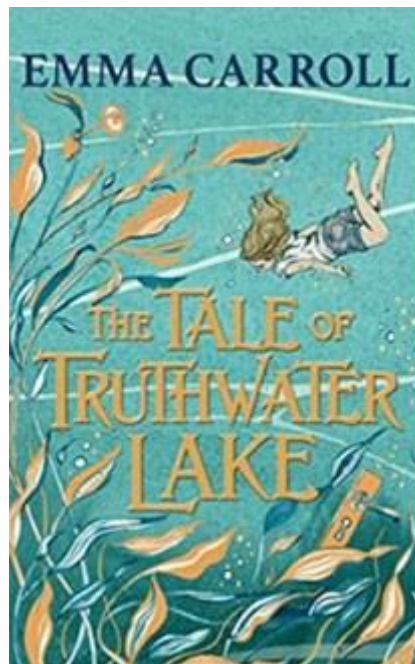
## Welcome to the Book Corner



**Malorie Blackman, illustrated by Dapo Adeola**

What happens when two children's book icons join forces? We're Going to Find the Monster, that's what! A fabulous tale of monster hunting and who Charlie and Eddie meet on the way... over the ocean, up a mountain, through the jungle to find the grumpy, hungry, snappy, prickly monster before breakfast. With lots of tickling this is such a great read-along book and children will soon learn to join in. The story invites lots of interaction with both

movements and words. Vibrant illustrations capture the joy and movement of the story. Children with vitiligo will see themselves represented in this story and there is a website to find out more about the condition.



## **The Tale of Truthwater Lake**

### **Emma Carroll**

This is a wonderful story with brilliant, headstrong characters who capture the readers' imagination and pull them into Polly's world. Casting an eye to the future and the probable effects of climate change as well as looking back to a time when water was already sparse, this story is set 10 years in the future and 70 years in the past. It gives the reader an insight into what our planet could look and feel like. A tale of climate change and friendship.

## Community News



### **Time Out for Parents: Children with Additional Needs Course.**

The course begins on Thursday 6th February 2025, 10am- 12noon, in person at Treasure Seekers, 52 Westgate Street, Gloucester, GL1 2NF.

There are 7 sessions on consecutive Thursdays (There will be no session on Thursday 20th February during the school break). The final session is on Thursday 27th March 2025.

The cost is £35 total

Parents can book a place on the course using the link below:

<https://kftseekers.community/civicrm/event/info/?reset=1&id=750>

This course is for parents of any child with an additional need for support, if:

- You are struggling to understand or manage your child's behaviour, or
- Your child has developmental challenges, or
- Your child becomes overwhelmed by their emotions, or
- You're feeling isolated because of your child's needs, or
- Traditional parenting methods are just not working well for your family,

Absolutely no official 'diagnosis' is necessary, you don't even have to know what might be causing your child to need extra help.

Through the course we encourage a willingness to explore ideas and find out what works for you and your family. We recognise that all children are individuals and no-one knows your child better than you.

The course offers practical, jargon-free advice and practical steps to engage and build relationships with your children with additional needs. The course is also a great opportunity to build relationships with other parents.

There are seven sessions, including:

1. Parenting Children with Additional Needs
2. Self-Esteem
3. Coping with Your Feelings
4. Understanding Behaviour
5. Managing Behaviour
6. Home and School Issues
7. The Wider Family

Time out for Parents: Children with Additional Needs is run by licensed facilitators for 'Care for the Family'.

Thank you, let me know if you have specific questions by emailing [training@kftseekers.org.uk](mailto:training@kftseekers.org.uk)





**Hillview Primary School GL3 3LH**

**With The Ball**

**February Holiday Club**

Tuesday 18th - Wednesday 19th - Thursday 20th February

25+ Sports, Activities and Styles of Dance

Suitable For Reception - Year 6. No previous experience required

Sibling And Pupil Premium Discounts Available

(9:00am - 3:00pm)

**£27.50** (1 Day)

**£75.00** (3 Days)

Scan To Book Your Space Today!

laurestorey@withtheball.co.uk | 07842821013 | www.withtheball.co.uk

Our children love attending, they come home buzzing and excited. Highly recommend!

**NHS**  
Gloucestershire Health and Care  
NHS Foundation Trust

with you, for you

Meet your local  
**School and Community Health Practitioners**  
**Gloucester School Nursing Team**



We provide School Nursing 'drop in' hubs at various venues throughout the academic year. We also conduct the national child measurement programme and vision screening in primary schools in Gloucester City.

The purpose of the hubs is to allow parents from Gloucester to speak to a member of the School Nursing team about issues they may be having with their child.

We can provide support with healthy lifestyle, diet and exercise, self-esteem, resilience, sleep, dental health, hygiene, anxiety, and behaviour. We can offer signposting to other local services.

If you feel the parents at your school could benefit from attending a drop-in hub hosted by the school nursing team, please contact us with details below.



Info Page

If a parent feels they would benefit from a referral to the School Nursing Team, they can be referred via the online form:  
<https://www.ghc.nhs.uk/self-refer/school-nurse-referral-form/>  
or search "School Nursing Gloucestershire Health and Care NHS"



Referral Form

Contact Details:

Office: 0300 421 4675 Mobile: 07773 531259 (Georgie) / 07974 427906 (Sherry)  
georgie.edwards2@ghc.nhs.uk / sherry.viner@ghc.nhs.uk



working together | always improving | respectful and kind | making a difference



Progressivesports®



## FEBRUARY HALF TERM ACTIVE CAMP

[CLICK HERE TO BOOK ONLINE NOW](#)



From £22 per day

9.30AM UNTIL 4.30PM



20+ Sports on offer



Monday to Friday  
17th - 21st February 2025



Kingsholm Primary School, Gloucester, GL1 3BN



[Progressive-Sports.co.uk](http://Progressive-Sports.co.uk)



01889 343 120



[NorthGlos@progressive-sports.co.uk](mailto:NorthGlos@progressive-sports.co.uk)



## Gloucester Pop-Up sessions

Allsorts are an activity provider for children with additional needs in Gloucestershire. We're running Pop-Up play sessions for 5-11 year olds at **Hardwicke Village Hall** from **January-March 2025**.

woo hoo!



- Children can play in a safe, non judgemental environment
- Opportunity for parents and carers to connect

Scan the QR code to sign up or contact 01453 750474 [info@allsortsglos.org.uk](mailto:info@allsortsglos.org.uk)



ACCESSIBLE EVERYDAY EXPERIENCES



Dates this Term

<https://www.beechgreenprimary.co.uk/calendar-dates>

Contact Us

Beech Green Primary

St James

Quedgeley

Gloucester

GL2 4WD

<https://beechgreenprimary.co.uk/>

Email addresses for Wildwood After School Club and extra-curricular clubs

[wildwoods@beechgreen.gloucs.sch.uk](mailto:wildwoods@beechgreen.gloucs.sch.uk)